

Introduction

The Skaarhoj Wave Board V2 communicates directly with PRODIGY.MP via JSON. Therefore only a properly configured network connection but no instance of globcon is required.

Requirements

- Computer with Windows 10 or 11 or macOS 10.15 or higher
- Administrator privileges
- Ethernet cable to connect Wave Board with network or micro-USB cable to connect with computer

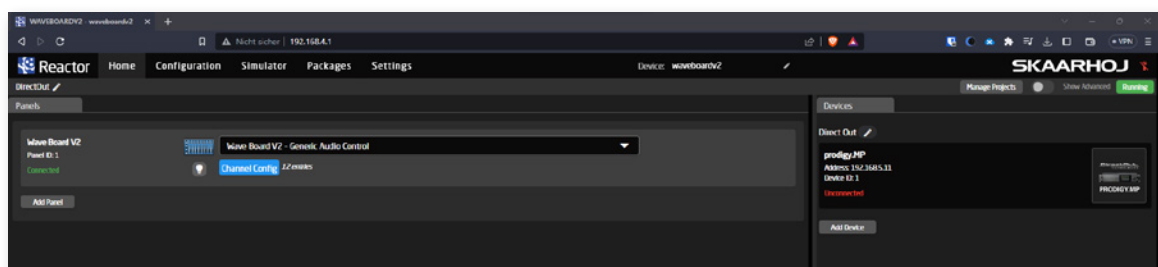
Quick Start

- connect the Wave Board V2 to your network using a network cable
- enter IP address of the Wave Board V2 into a browser to access the Reactor configuration page. If the IP address of the device is unknown, follow the instructions for [Network Configuration](#).
- [add and connect PRODIGY.MP](#) either automatically or manually using PRODIGY.MP's IP address - section 'Devices' on the Reactor page
- [choose the parameter mapping](#) 'Wave Board V2 - PRODIGY.MP' from the dropdown menu - section 'Panels'
- [edit channel configuration](#) as needed

Network Configuration

Configure your Skaarhoj controller to be in the same IP range as your audio devices.

Video: <https://www.skaarhoj.com/support/3-access-without-dhcp>



Option 1 - Network configuration via built-in WiFi access point

1. Activate the built-in wireless access point by pushing the button below the power supply socket on the controller for about 3 seconds. A purple LED lights up next to the button once the wireless access point is active.
2. Check available wireless networks nearby. A new wireless network named 'SKAARHOJ_[YOUR DEVICE'S SERIAL NO]' should be available. Connect to that wireless network using the password 'skaarhoj'.
3. Connect to the Skaarhoj controller with a browser.
Default IP address: 192.168.4.1.



NOTE

To access the controller's web configuration app you might need to change your computer's IP address to match the IP 192.168.4.1 (e.g. 192.168.4.2 with a subnet mask of 255.255.255.0)

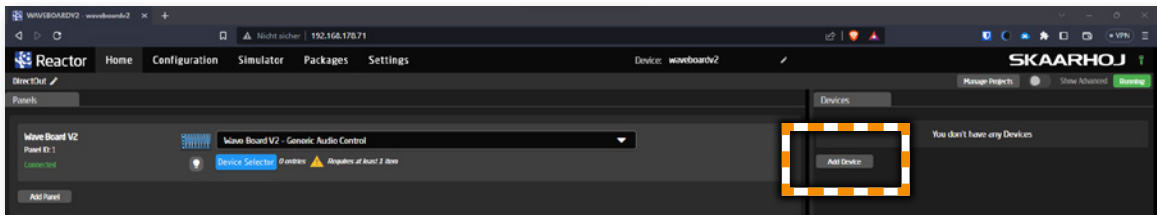
4. Edit the IP address to match the address range of your audio devices ('Settings')
After clicking on 'Save' the controller will be reachable under the new IP address.

Option 2 - Network configuration via Micro-USB cable

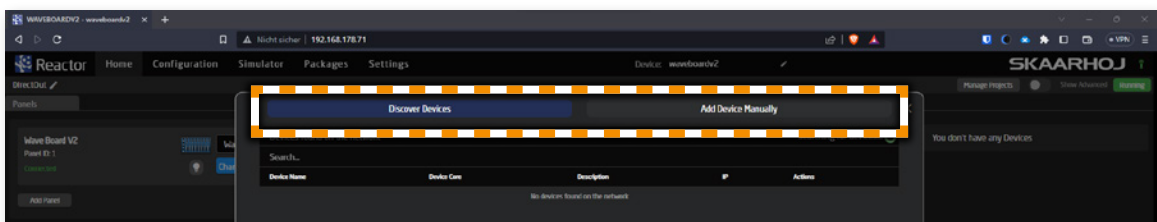
1. Download the Skaarhoj Firmware Updater app from the Skaarhoj homepage:
<https://www.skaarhoj.com/support/firmware-updater>
2. Connect the controller to your computer using the Micro-USB port next to the controller’s network socket
3. Start the Firmware Updater app
The bottom part of the app shows the connected controller and the current IP address.
4. Edit the IP address to match the address range of your audio devices (‘IP Config’)
5. ‘Save Settings’- after restarting the controller’s network service the controller will be available under the configured IP address.

Connect PRODIGY.MP

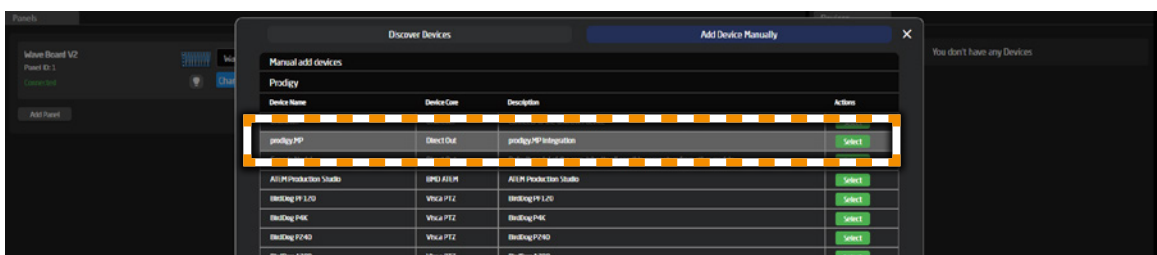
1. ‘Add Device’ in section ‘Devices’



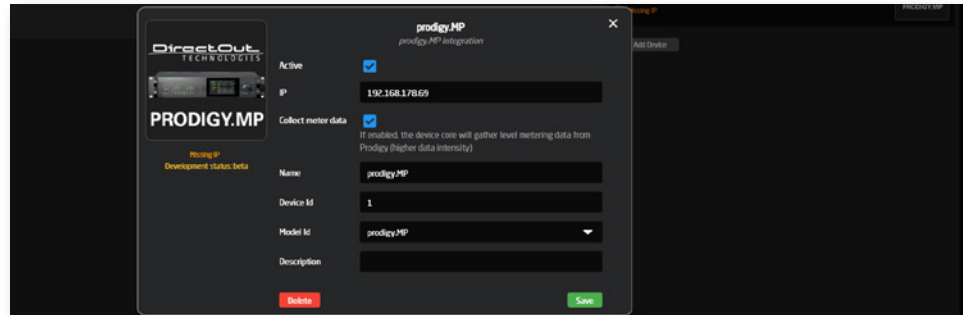
2. Choose ‘Discover Devices’ or ‘Add Device manually’



3. To manually add a PRODIGY.MP, type ‘prodigy’ to filter the list of controllable devices and select ‘PRODIGY.MP’



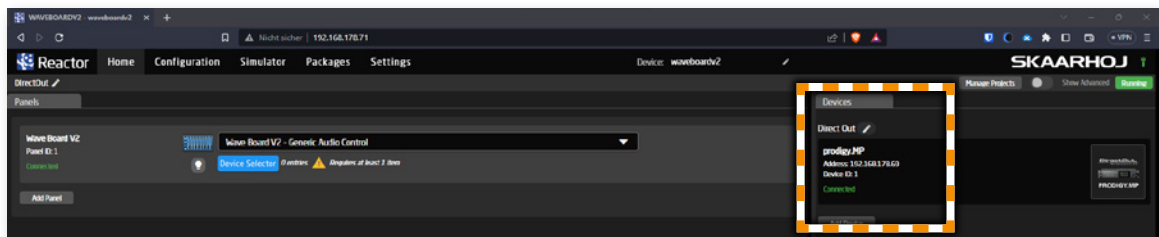
4. Enter the PRODIGY.MP's IP address and check 'Collect meter data' to display level meters on the Wave Board V2.



NOTE

The device ID entered here may differ device IDs assigned in globcon

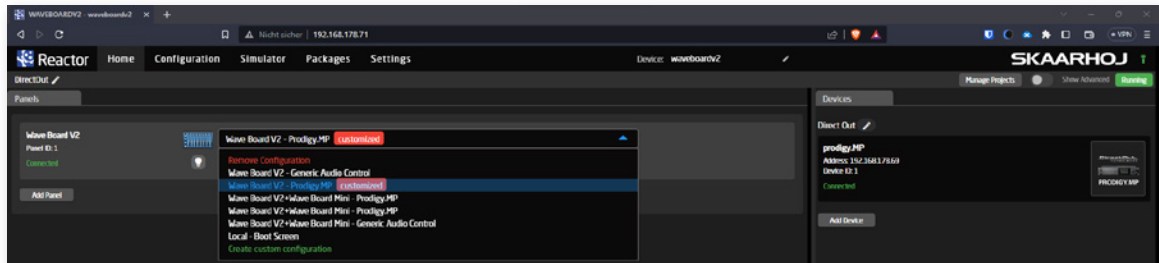
5. Click 'Save'. The device status should now switch to 'Connected'.



Configuration Wave Board V2

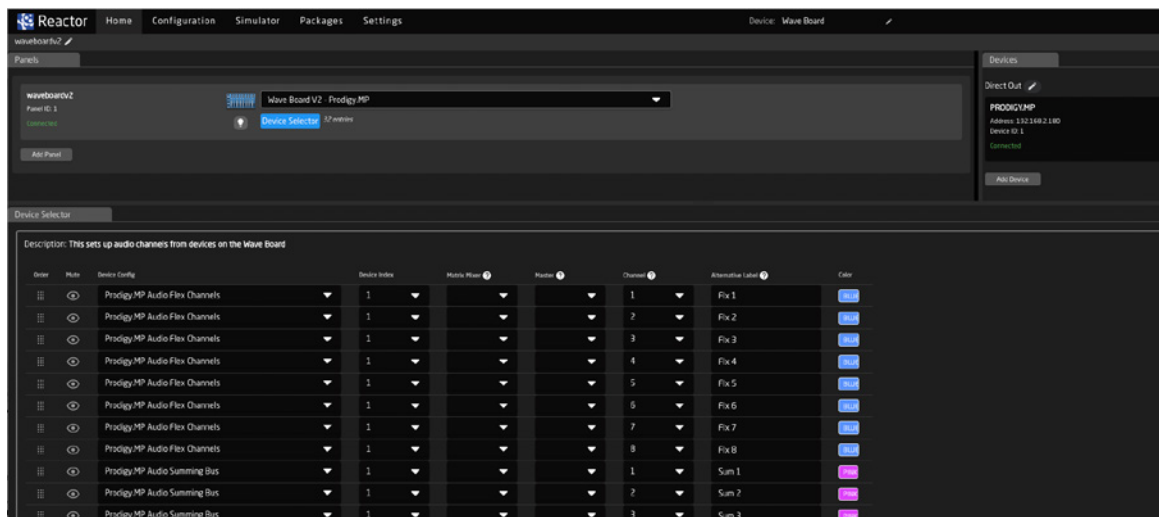
Parameter Mapping

Select 'Wave Board V2 - PRODIGY.MP' from the dropdown list



Edit Channel Configuration

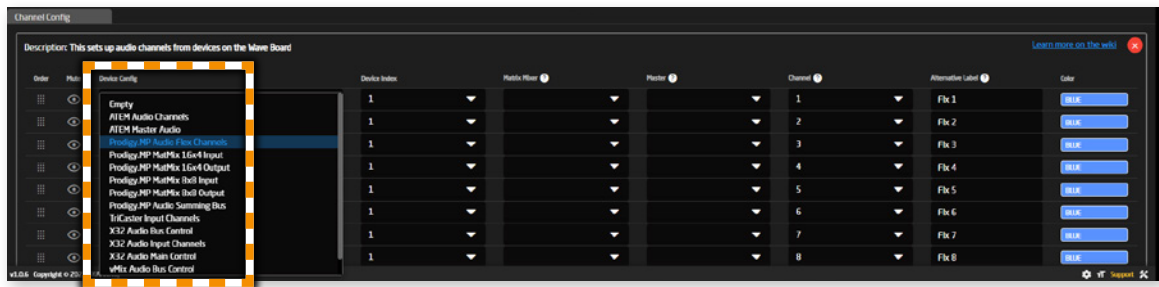
To edit your channel configuration click on the blue 'Channel Config' button. A new section 'Channel Config' showing all 32 channels of the Wave Board V2 appears.



Device Selector

Select PRODIGY.MP channel type to be assigned to control surface. The 'Device Selector' section consists of a table of 32 configurable channels, represented by 4 layers each of eight channels on the Wave Board V2 surface.

Select the PRODIGY.MP channel type in the 'Device Config' column for each channel on the control surface:



Available channel types:

- Flex Channels
- MatMix 16x4 Input
- MatMix 16x4 Output
- MatMix 8x8 Input
- MatMix 8x8 Output
- Summing Bus

Parameters to specify the exact target of the selected Channel type:

Device Config	Matrix Mixer	Master	Channel
Flex Channel	no effect	no effect	Channel 1 - 32
MatMix 16x4 Input	1 - 8, referring to MatMix 1-8	1 - 4, referring to Master A- D	Channel 1 - 16
MatMix 16x4 Output	1 - 8, referring to MatMix 1-8	no effect	A- D (1 - 4)
MatMix 8x8 Input	1 - 8, referring to MatMix 9-16	1 - 8, referring to Master A- H	Channel 1 - 8
MatMix 8x8 Output	1 - 8, referring to MatMix 9-16	no effect	A- H (1 - 8)
Summing Bus	no effect	no effect	Bus 1 - 32

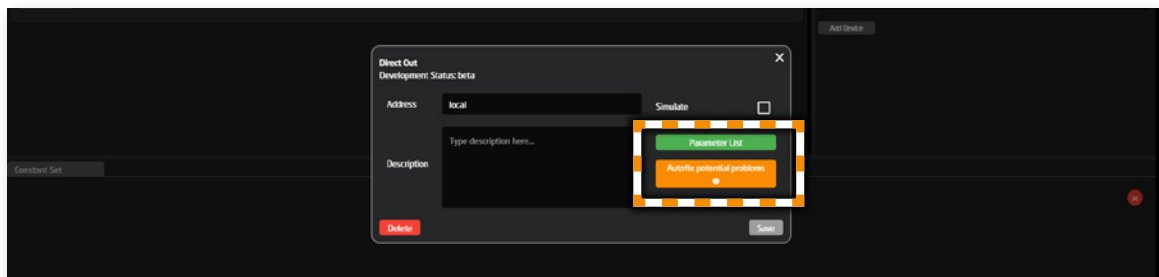
Examples

Device Config	Matrix Mixer	Master	Channel	Target
Flex Channel			Channel 22	Flex Channel 22
MatMix 16x4 Input	3	2	Channel 14	MatMix 3 Input Ch 14 to Master 'B'
MatMix 16x4 Output	5		C	MatMix 5 Master 'C'
MatMix 8x8 Input	2	6	Channel 3	MatMix 10 Input Ch 03 to Master 'F'
MatMix 8x8 Output	4		G	MatMix 12 Master 'G'
Summing Bus			Bus 14	Summing Bus 14

Edit Encoder and Button configuration

The function of an encoder or button is identical across all four layers and will not switch with a layer change.

A full list of implemented parameters that can be assigned to encoders, buttons, faders and displays is available in the PRODIGY.MP device properties ('Parameter List').

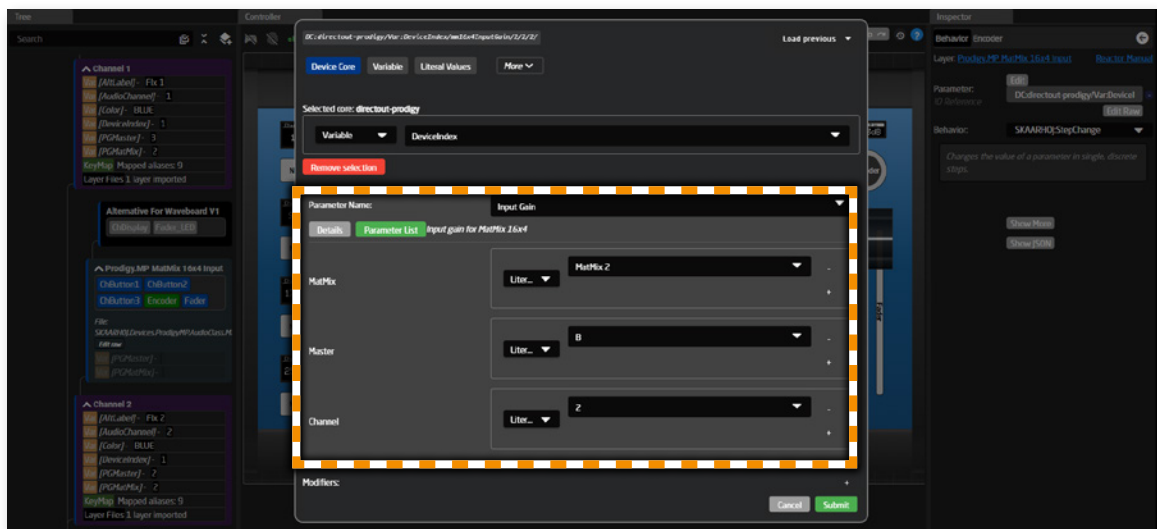


- Switch to the 'Configuration' tab to display the surface of the Wave Board v2 showing the current configuration.

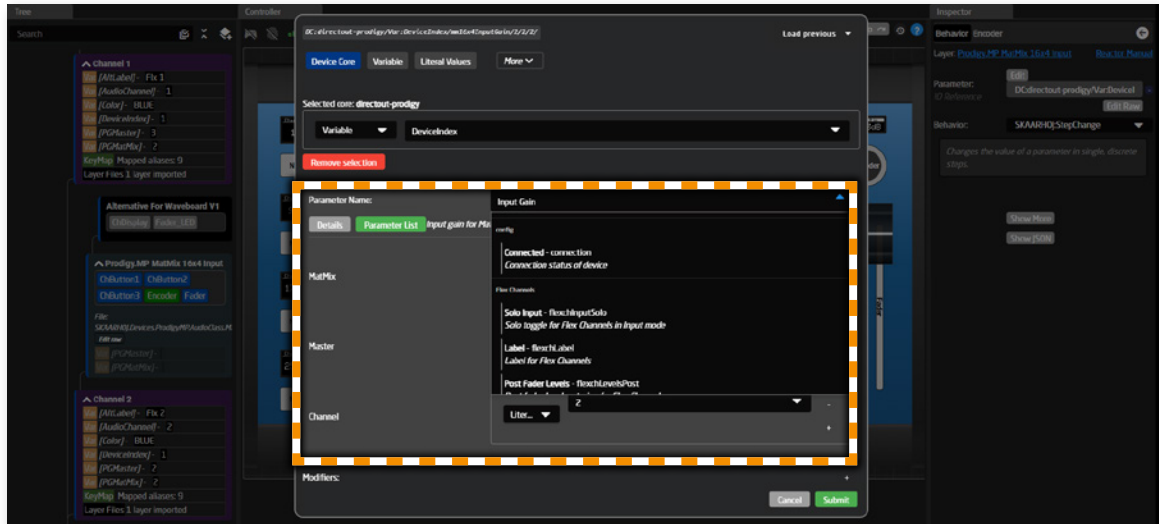


- Click on the encoder / button you want to edit.
- Click on 'Edit' in the 'Inspector' section.

A new window shows the currently assigned parameter (here 'Input Gain' for MatMix 16x4 / MatMix2 / Master B / Input Channel 2).



- Open the dropdown menu 'Parameter Name' to show a list of available parameters and select one of them.



- Enter all required parameters (here: Matmix #, Matrix #, Channel #) and click 'Submit'.



Check the Reactor Manual for a detailed description of all available options:

<https://github.com/SKAARHOJ/Support/blob/master/Manuals/Blue Pill/BluePillReactorManual.pdf>



NOTES

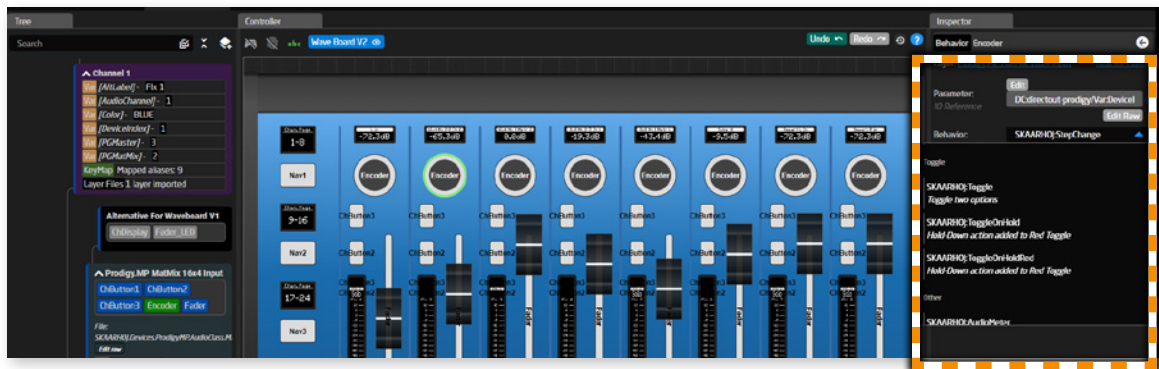
It is possible to assign parameters that are not related with the selected fader; this might lead to confusion if unintentionally mixing parameters of different channels of the PRODIGY.MP on the same Wave Board channel.

It is also possible to assign 'Solo' and 'Mute' parameters to Encoders, as well as for example 'Gain' parameters to buttons. These configurations won't be usable.

- Click on the dropdown menu 'Behavior' to select a behavior of the encoder or button



For a rotary encoder you may choose an option from the section 'Change stepwise' and for a button you may choose an option from the section 'Toggle'.



Check the Reactor Manual for a detailed description of all available options:
[https://github.com/SKAARHOJ/Support/blob/master/Manuals/Blue Pill/BluePillReactorManual.pdf](https://github.com/SKAARHOJ/Support/blob/master/Manuals/Blue%20Pill/BluePillReactorManual.pdf)

- Repeat the process for all encoders / buttons you want to change.