



Installation Guide for USB Control

- Installation USB Serial Driver (Windows®)
- Installation DirectOut Update Tool (Windows®)
- Firmware Update Procedure (Windows®)

Copyright

All rights reserved. Permission to reprint or electronically reproduce any document or graphic in whole or in part for any reason is expressly prohibited, unless prior written consent is obtained from the DirectOut GmbH.

All trademarks and registered trademarks belong to their respective owners. It cannot be guaranteed that all product names, products, trademarks, requisitions, regulations, guidelines, specifications and norms are free from trade mark rights of third parties.

All entries in this document have been thoroughly checked; however no guarantee for correctness can be given.

DirectOut GmbH cannot be held responsible for any misleading or incorrect information provided throughout this manual.

DirectOut GmbH reserves the right to change specifications at any time without notice.

DirectOut Technologies® is a registered trademark of the DirectOut GmbH.

© DirectOut GmbH, 2016

Table of contents

Installation USB Serial Driver	5
Introduction	5
Requirements	5
Driver Details	5
Installation	6
Deinstallation	12
Installation DirectOut Update Tool	13
Introduction	13
Requirements	13
Installation	13
Repair / Remove Installation	15
Firmware Update Procedure	16
Introduction	16
Requirements	16
Installation	16
Error Messages	18

This page is left blank intentionally.

Installation USB Serial Driver

Introduction

DirectOut devices with USB port can be controlled and updated via a Windows PC. While remote functionality is provided through a virtual com port driver, firmware updates use a proprietary communication with the device. For both USB remote and firmware updates the DirectOut USB Serial driver needs to be installed on the system.

Requirements

- Windows® operating system XP, Vista, 7, 8, 10
- USB port, USB cable, installation software for driver

Software and drivers can be downloaded at www.directout.eu.

Virtualized environments such as Parallels, Virtual Box or other are **not** supported!

Driver Details

DirectOut CDM V 1.08

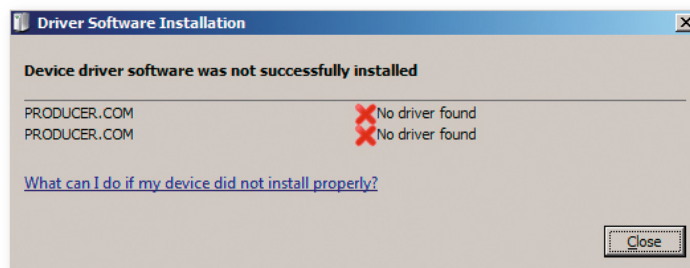
This driver provides access to both virtual com port and the proprietary direct interface access.

The driver works with the following DirectOut devices:

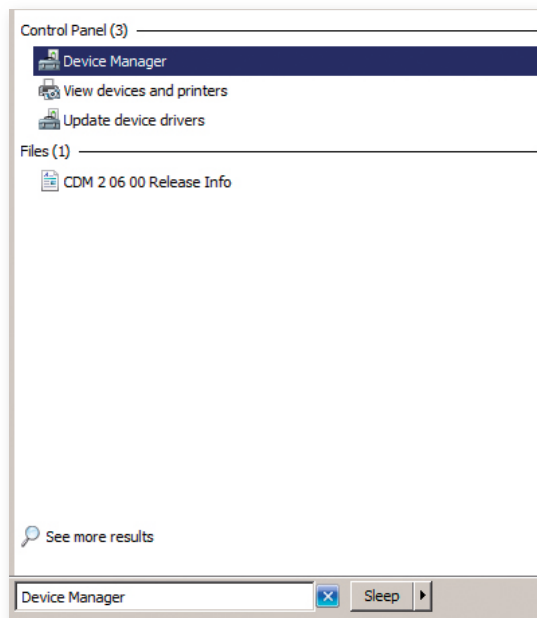
- MADI.SRC
- PRODUCER.COM
- M.1K2 (green)
- ANDIAMO Series
- MA2CHBOX Series
- EXBOX.BLDS
- EXBOX.GPIO
- MADI.MONI

Installation

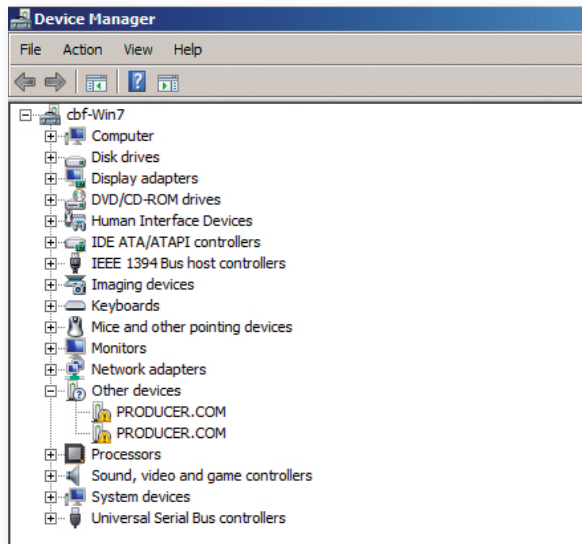
1. Unpack the driver files into a temp directory.
2. Connect the USB port of the DirectOut device to a USB port of your computer.
3. Switch the device on.
4. When connecting the device Windows will try to download driver files from the Windows Update server. As the DirectOut drivers are not distributed through the Microsoft Update Service this attempt will fail.



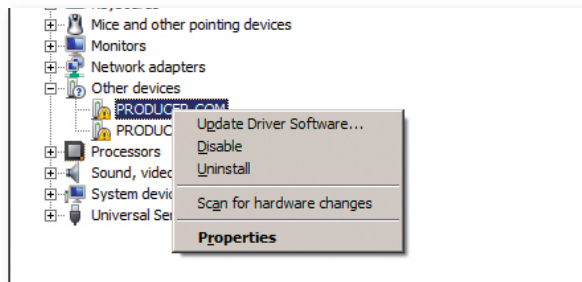
5. Press 'Start' and type 'Device Manager' into the search field. Press Enter.



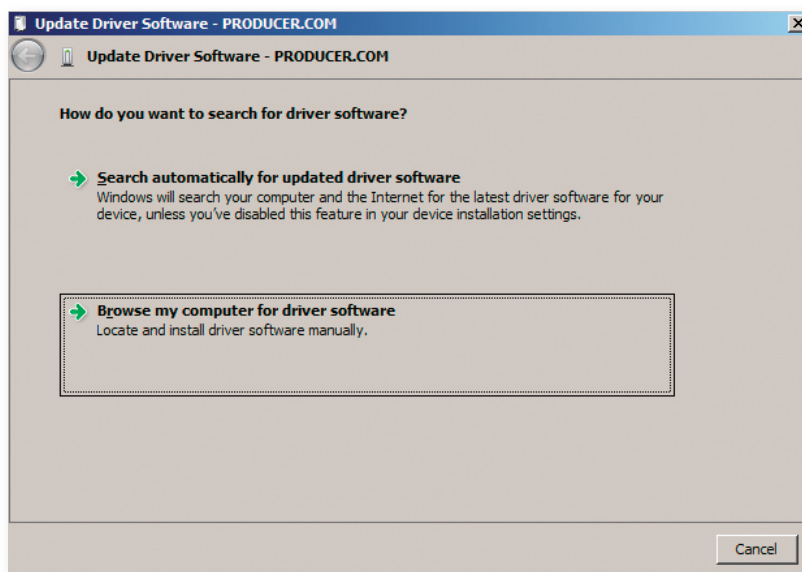
6. The Device Manager will show two unknown devices called 'PRODUCER.COM' (name may vary depending on the product).



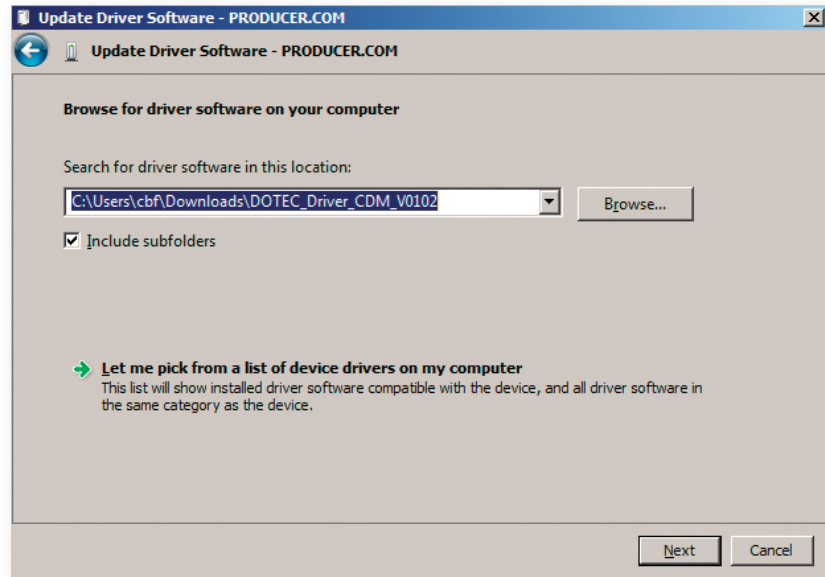
7. Right click on the first device and select 'Update Driver Software...'



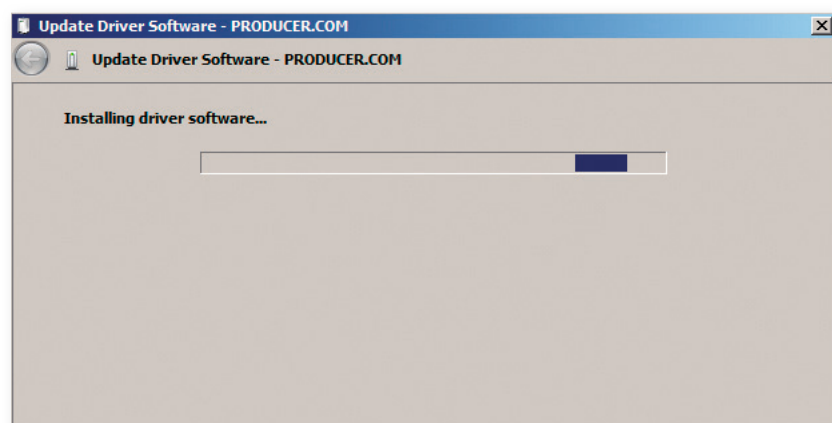
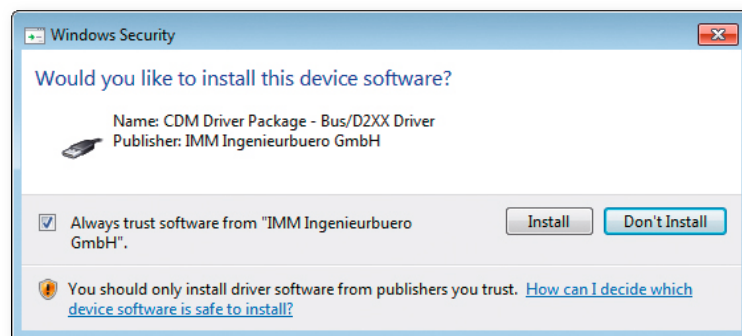
8. Select 'Browse my computer for driver software'.



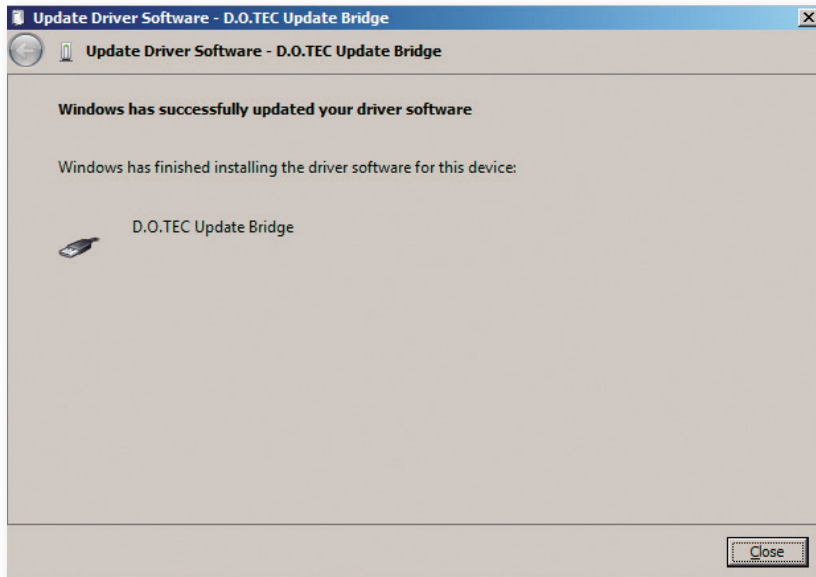
9. Browse to the location where you downloaded and unpacked the driver and select the folder.



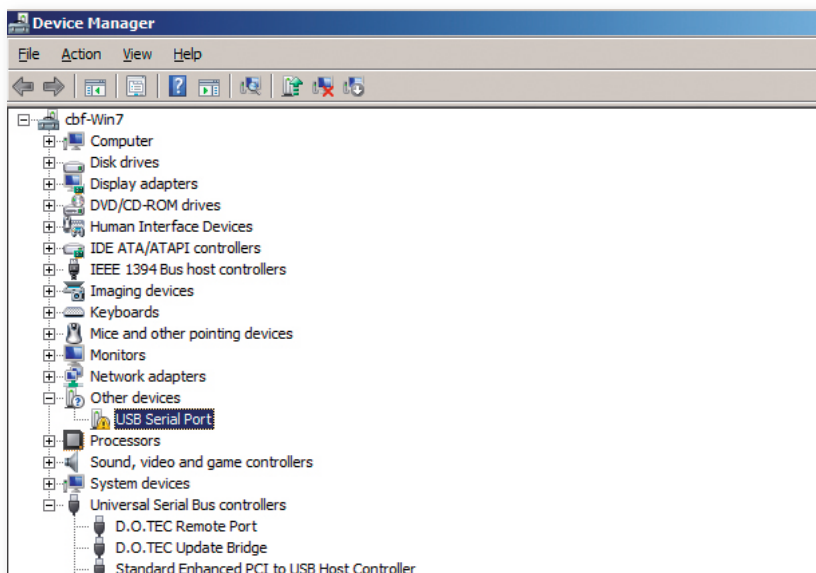
10. Click 'Next'. A Windows security warning will occur. Select 'Install' to continue. Once you mark the checkbox 'Always trust software from...' will prevent this warning to prompt again.



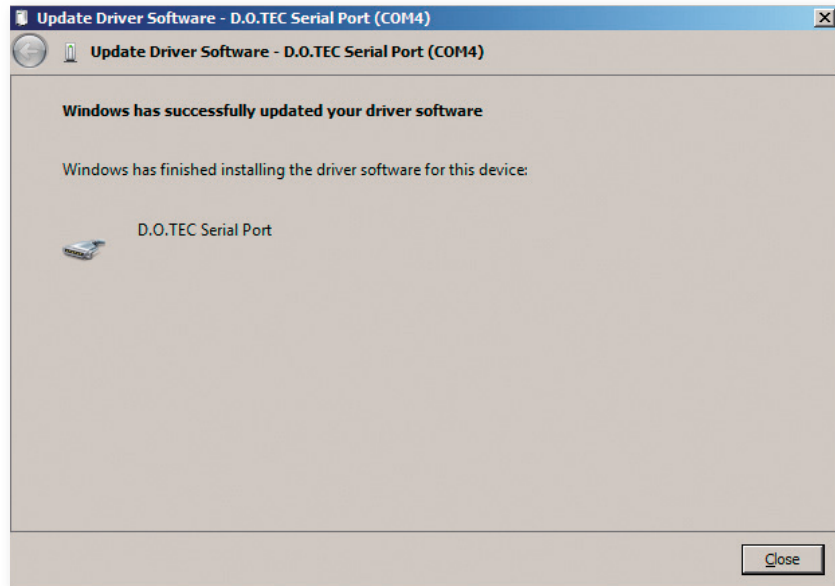
11. When Windows has finished the installation process press 'Close' to close the dialog.



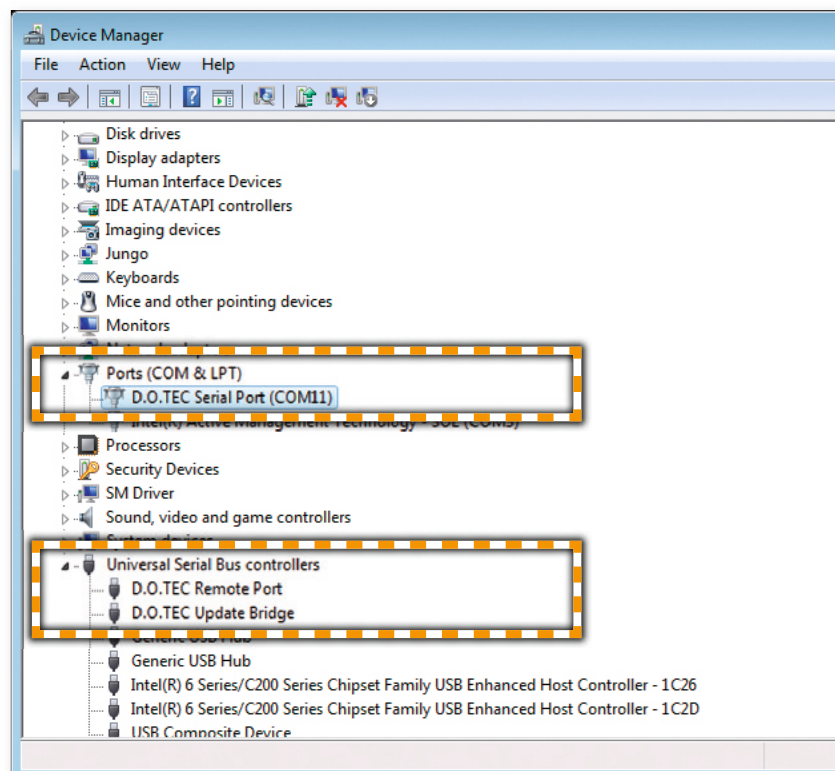
12. Repeat steps 6 to 10 for the remaining device in the Device Manager.
13. A third device will be detected by Windows now, the serial com port.



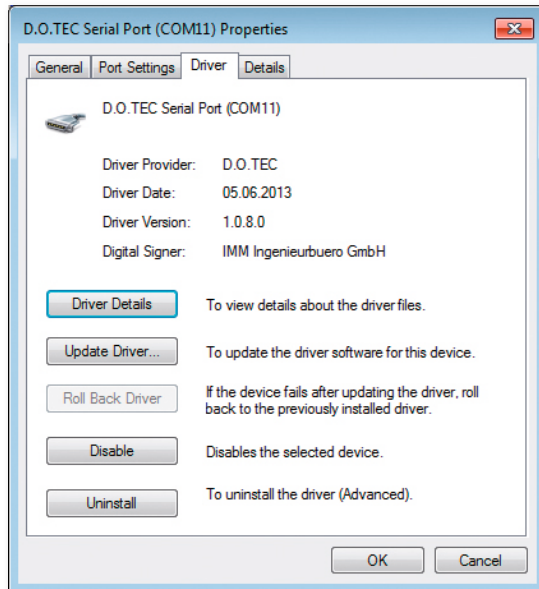
- Repeat steps 6 to 10 for the serial port. The assigned com port number will be displayed. To change the com port number please use the Device Manager, select 'D.O.TEC Serial Port' and change the port in the device properties.



- Device Manager with all devices installed.



- 16.** You may check the properties (e.g. driver version) of the installed driver by right-click on the particular device.

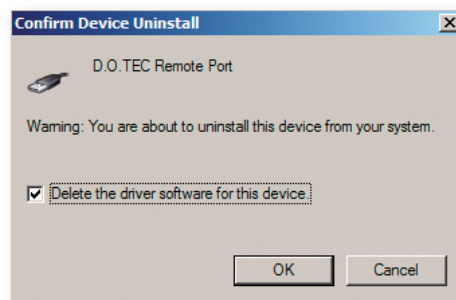


Deinstallation

To uninstall the driver the device must be connected to the computer.

To remove the DirectOut USB Serial driver from your system, please execute the following instructions:

1. Press 'Start' and type 'Device Manager' into the search field. Press Enter.
2. Select the node "Ports (COM & LPT)" and decollapse it.
3. Right click on 'D.O.TEC Serial Port (COMx)'
4. Select Uninstall
5. Check the 'Delete the driver software for this device' field and click 'OK'.



6. Decollapse the node 'Universal Serial Bus controllers'.
7. Right click on D.O.TEC Remote Port. Select Uninstall. Check the 'Delete driver software' field and click 'OK'.
8. Right click on D.O.TEC Update Bridge. Select Uninstall. Here will be no checkbox. Just click <OK>.

Installation DirectOut Update Tool

Introduction

This is a description of the installation routine for the DirectOut Update tool for Microsoft Windows®. To update the firmware of the connected device via USB the DirectOut Update Tool has to be installed first.

Requirements

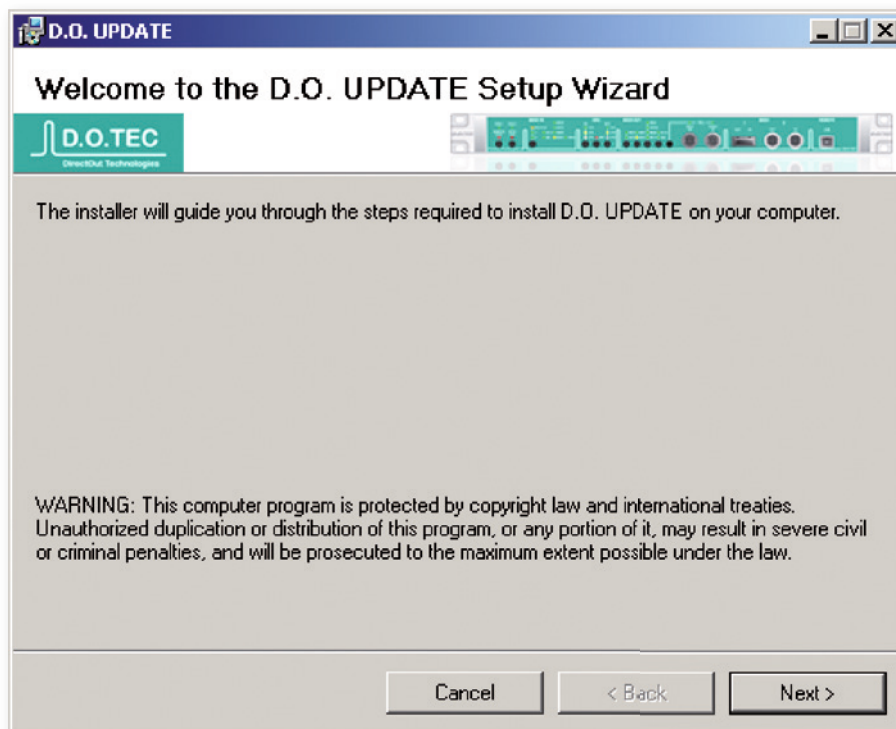
- Windows® operating system XP, Vista, 7, 8, 10
- USB port, USB cable, installation software
- Installed drivers for D.O.Tec Update Bridge and the D.O.TEC Remote Port

Software and drivers can be downloaded at www.directout.eu.

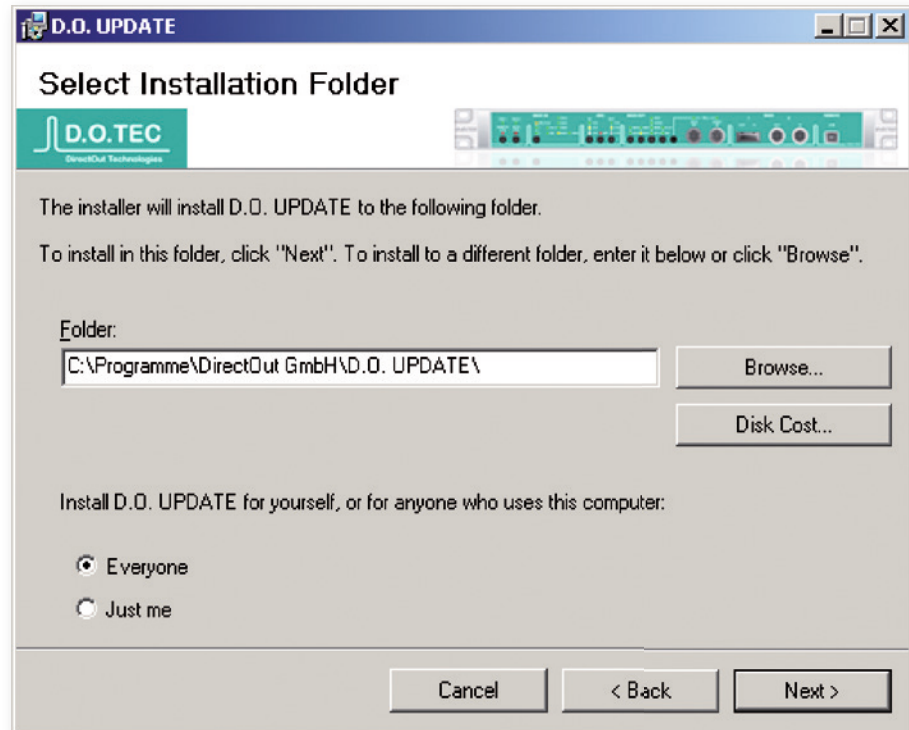
Virtualized environments such as Parallels, Virtual Box or other are **not** supported!
See also „Installation USB Serial Driver“ on page 5.

Installation

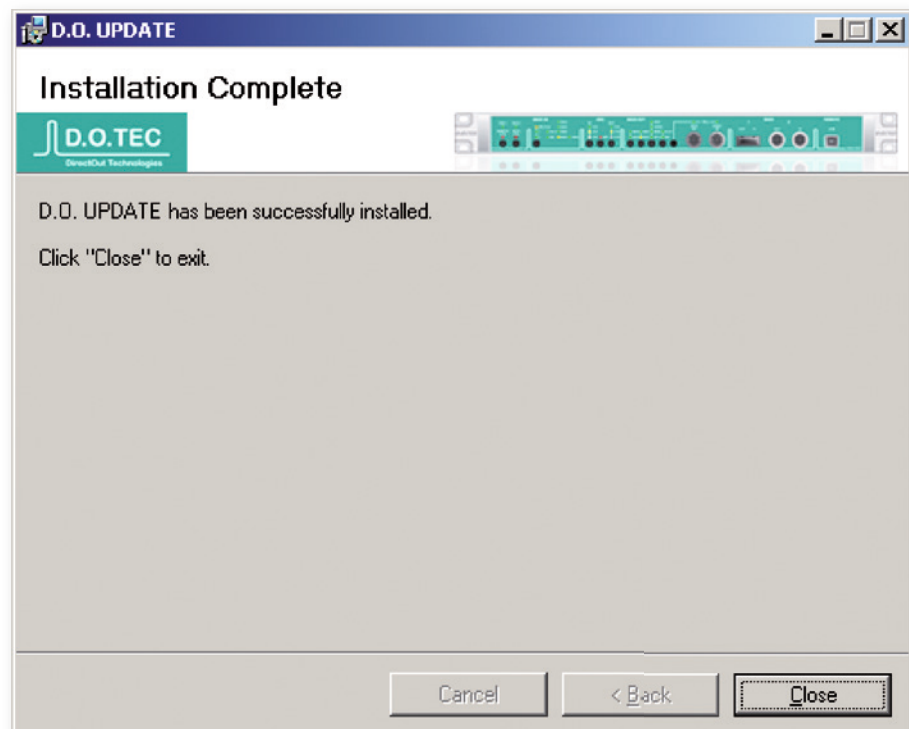
1. Unpack the DO_UPDATE_xx.zip to a temp directory.
2. Make sure that all applications are closed.
3. Double-Click DO_Update_Setup.msi (not Setup.exe!). The D.O.Update Setup Wizard will open.



4. Select the folder where the software has to be installed and click 'Next' twice to confirm the installation.



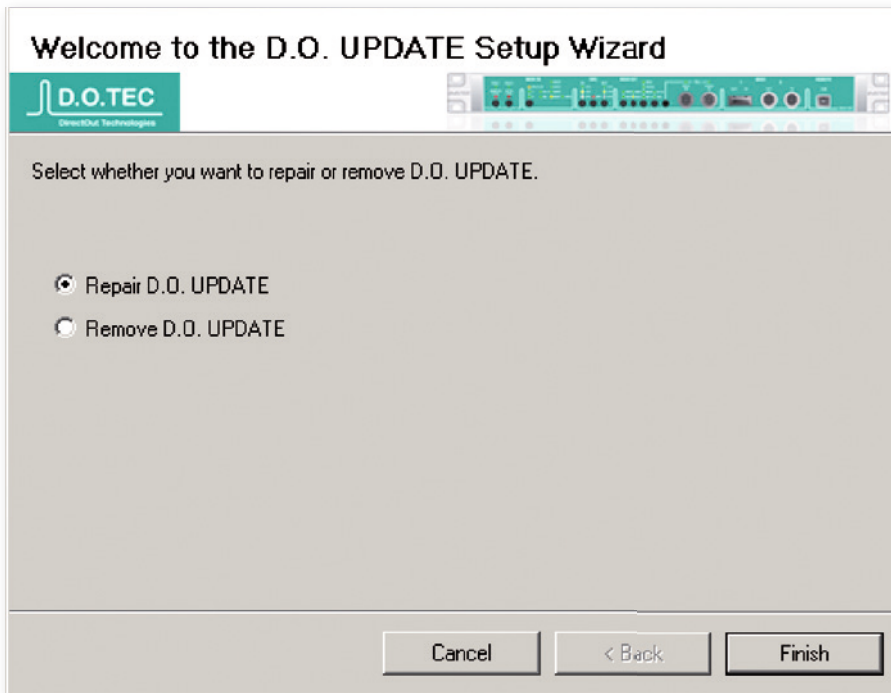
5. After the installation process has completed click 'Close' to exit the installation.



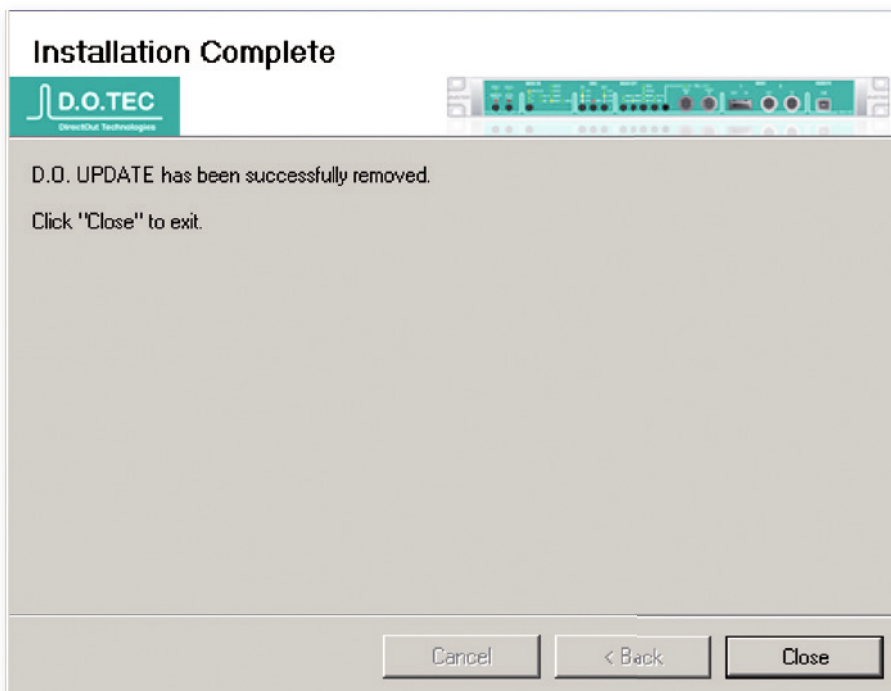
6. When the installation is done you can delete the temp directory.

Repair / Remove Installation

Once D.O.Update is already installed on the system and the installer is launched again it will offer a repair or removal of the installation. Select and click 'Finish' to confirm your choice.



After repair / removal click 'Close' to exit the installation wizard.



Firmware Update Procedure

Introduction

This is a description of the firmware update routine using the D.O.Update tool for Microsoft Windows®.

Requirements

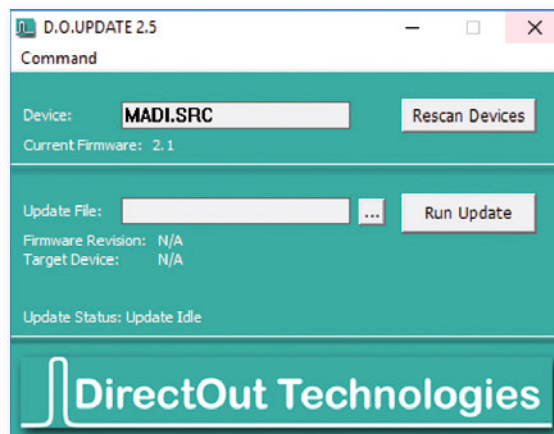
- Windows® operating system XP, Vista, 7, 8, 10
- USB port, USB cable
- Installed drivers for D.O.Tec Update Bridge and the D.O.TEC Remote Port and installed D.O.Update (see „Installation USB Serial Driver“ on page 5 and „Installation DirectOut Update Tool“ on page 13).

Software and drivers can be downloaded at www.directout.eu.

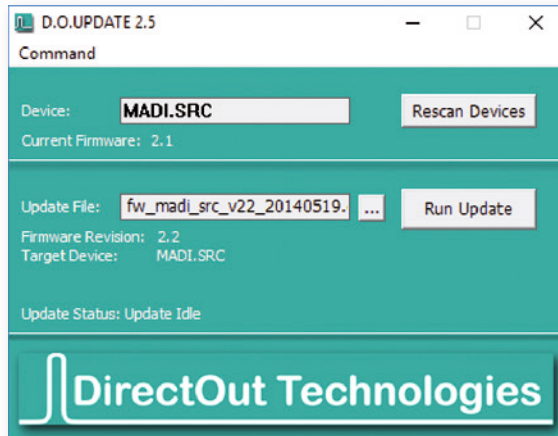
Virtualized environments such as Parallels, Virtual Box or other are **not** supported!

Installation

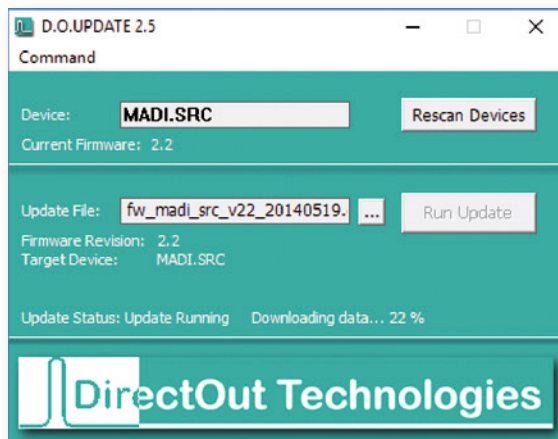
1. Unpack the zip file (e.g. fw_madi_src_v22_20140519.zip) to a temp directory.
2. Make sure that the device is switched on and connected to the USB port.
3. Launch D.O.Update
4. D.O.Update will open and show the device to be updated.



5. Browse to the unpacked firmware file (e.g. fw_madi_src_v22_20140519.dotf).

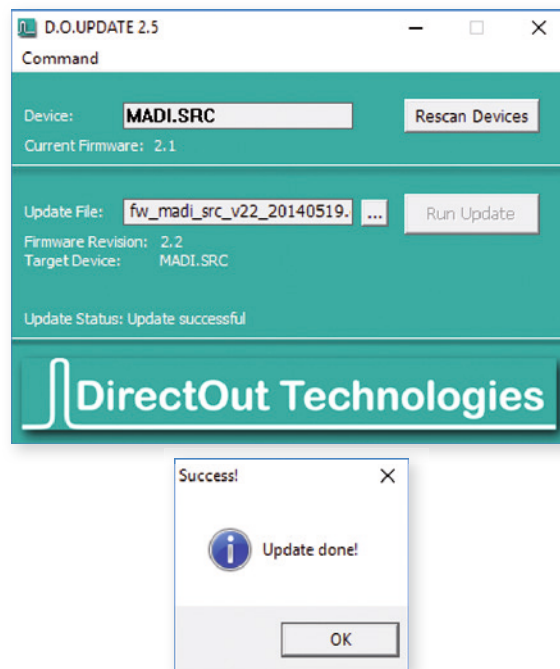


6. Click <Run Update> to start the updating process.



**Never disconnect the device during the update process!
Neither the power nor the USB connection!**

7. When the update is done you can exit D.O.Update.



Error Messages

Once there is no device connected and D.O.Update is launched an error message will pop up.



Control the connections of the device and ensure that it is switched on. Then click the button 'Rescan Devices'.

Once an error occurs during or after the update process, the update procedure can be repeated easily.

This page is left blank intentionally.

DirectOut GmbH

Leipziger Strasse 32
09648 Mittweida
Germany

T: +49-3727-5665-100
F: +49-3727-5665-101
www.directout.eu